

The Dutch German Cooperation on Plant Genetic Resources

Lothar Frese¹ and Roel Hoekstra²

¹ *Julius Kühn-Institute - Federal Research Centre for Cultivated Plants (JKI) Institute for Breeding Research on Agricultural Crops, Quedlinburg, Germany*

² *Centre for Genetic Resources the Netherlands (CGN), Wageningen, The Netherlands*



Outline of the presentation

- 1. German Dutch Cooperation**
 - 1.1 Objectives and organisational aspects**
 - 1.2 Milestones**
 - 1.3 Services to the European PGRFA community**
 - 1.4 Dutch German cooperation and Europe**

- 2. An European Genebank Integrated System (AEGIS)**
 - 2.1 Changed legal and organisational frameworks**
 - 2.2 Objectives and organisational aspects**

- 3. Comparison and conclusions**

1.1 Objectives and organisational aspects

According to a one page agreement (7 s) between both Ministries of Agriculture signed by I. Kiechle and G.J.M. Braks on 12 May 1984

1 Objectives of the cooperation

- ✓ Cooperation on safeguarding of PGR
- ✓ Research activities exclude projects in the field of pre-competitive plant breeding
- ✓ All crops, primitive forms and former breeding varieties available in the partner countries and within the sphere of competence of the Ministries are included
- ✓ Long-term storage of all samples at the Genebank at Braunschweig
- ✓ Central documentation of 1) passport data, 2) evaluation data and 3) unrestricted on-line access to all data by both countries
- ✓ Exchange of material
- ✓ Exchange of scientists

1.1 Objectives and organisational aspects

According to the trustees board's rules of procedure (1984, 10 s)

1 Tasks of the board of trustees

It shall initiate joint projects in the following fields:

- ✓ Collection
- ✓ Taxonomic determination
- ✓ Merging of duplicates
- ✓ Long-term storage and seed physiology
- ✓ Tissue culture of vegetatively propagated plant species
- ✓ Regeneration and increase of accessions
- ✓ Documentation
- ✓ Security duplication



It may suggest joint PGR utilization projects.

1.2 Milestones (1968 – 1974)

1968: Establishment of the German Dutch Commission for Agricultural Research

1970: German Minister of Finance agreed financing the establishment and operating costs of the Genebank at Braunschweig (Bommer, 1972)

1971: The establishment of a European Solanum germplasm station was discussed at the OECD, Paris.

Contribution	Recurrent annual costs
Germany	76500 DM
OECD	122000 DM

Country 5: My private opinion is that we
Country 2: Highly interested in the ...
Country 1: Calculate national contribution according to national potato production (hectare, yield, biological or financial yield?)
would pay but can't currently.

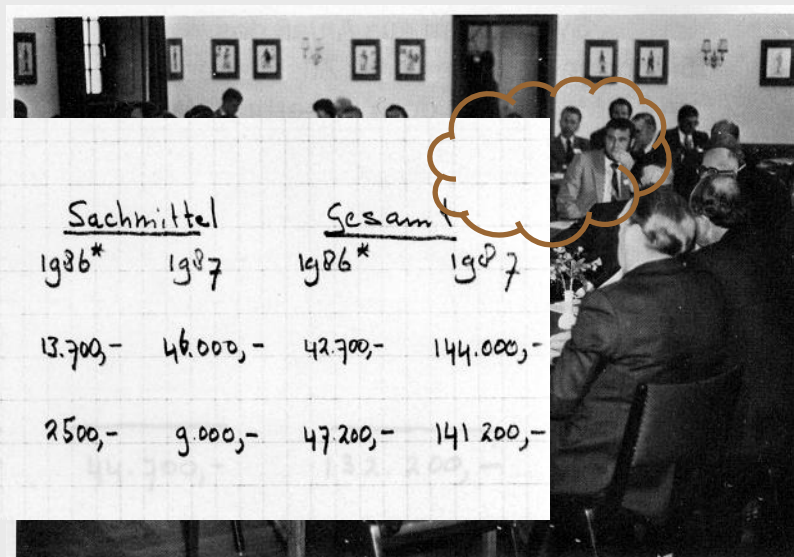
1974: Establishment of the German Dutch collaboration on potato genetic resources

1.2 Milestones (1974 – 1999)

1983: Celebration of 15 years of German Dutch cooperation in the field of agricultural research

	<u>Personalkosten</u>		<u>Sachmittel</u>		<u>Gesamt</u>	
	1986*	1987	1986*	1987	1986*	1987
Niederlande	29.000,-	98.000,-	13.700,-	46.000,-	42.700,-	144.000,-
Bundesrepublik	44.700,-	132.200,-	2500,-	9.000,-	47.200,-	141.200,-

Prof. Dr. ir. D. de Zeeuw und Dr. K. Eisenkrämer bei der Paraphierung der Vereinbarung über die Zusammenarbeit auf dem Gebiet der Sicherung pflanzengenetischer Ressourcen.



1984: Programming Board was replaced by Board of Trustees

1986: Establishment of the Dutch German Beta collection

1989: Reunification of Germany

1999: Last meeting of Board of Trustees

1.3 Services to the European PGRFA community

1974 – 1995 (at Braunschweig)

- **Merger of the national potato collections**
- **Work program according to the objectives and tasks**
- **Establishment of the in vitro collection of former potato varieties and later cryoconservation**
- **Cleaning seed propagated wild and primitive forms from quarantine viruses**
- **The NL-D Potato collection moved from Braunschweig to Wageningen**

1986 – 1991 (at Wageningen)

- **Merger of the national Beta collections**
- **Work program according to the objectives and tasks**
- **The D-NL Beta collection moved from Wageningen to Braunschweig**

1.3 Services to the European PGRFA community

Continued at the CGN after 1999

- **Comprehensive program on safeguarding of potato genetic resources and management of the former NL-D collection of seed propagated potato wild species and primitive forms**

The ECPGR Wild Potato Database

Plant Research International,
Centre for Genetic Resources, the Netherlands (CGN)
PO Box 16. 6700 AA, Wageningen, The Netherlands
Tel: ++(31-317) 477077; Fax: ++(31-317) 418094

Database manager: [Mr Roel Hoekstra](#)

- **Advise for user community**

Continued at the BAZ /JKI after 1999

- **Merger of BAZ holding, including the D-NL collection of former potato varieties into the IPK holding**

The ECPGR International Database for *Beta*

Federal Research Centre for Cultivated Plants - Julius Kuehn Institute
Erwin Baur Strasse 27, D-06484 Quedlinburg, Germany
Tel.: ++ (49-3946) 47701; Fax: ++ (49-3946) 47255

Database managers: [Mr Lothar Frese](#) and [Mr Christoph Germeier](#)

- **Advise for user community**

1.3 Services to the international potato PGR community

1990: start of APIC (Association for Potato Intergenebank Collaborators)

1991: 1st meeting, Sturgeon Bay

- large group: curators from USA, Russia, UK, (former east) Germany, Dutch-German, CIP, Argentina, Peru, Ecuador
- representative from IBPGR
- taxonomists Hawkes, Ochoa & Spooner

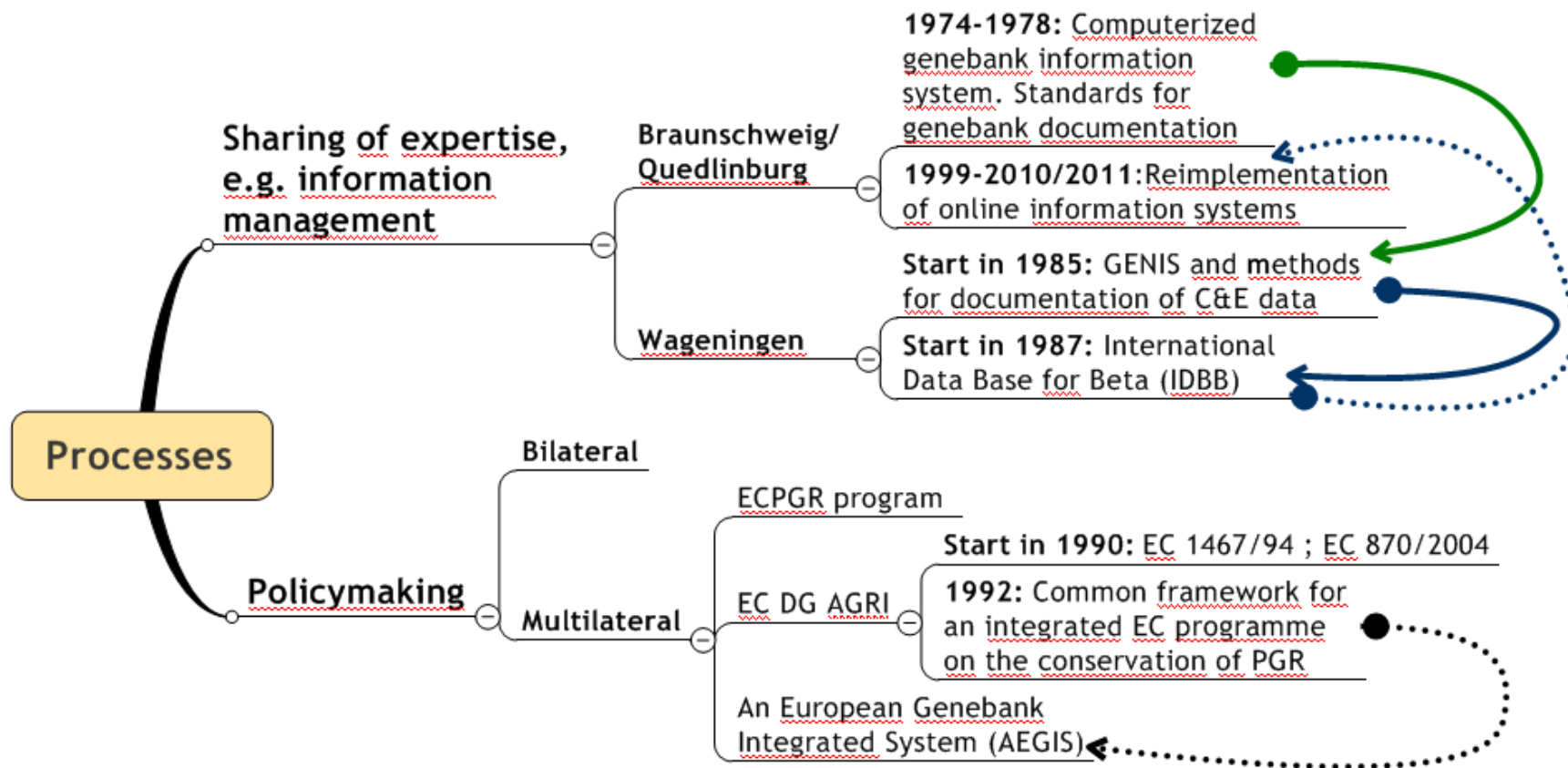
1992: 2nd meeting Braunschweig - steering group only: USA, CIP, Germany, NL-D

- standardization passport data (e.g. collector codes)
- standardization of descriptor states of C&E data

1993: 3rd meeting Lima/Cusco - steering group & PER

- 1st version of internat. wild potato DBase created by CIP
 - collector number as unique identifier for redundancy
 - 8649 accessions, **2393 redundant**

1.4 Dutch German cooperation and Europe



2. An European Genebank Integrated System (AEGIS)

AEGIS task force (2006)


- How to improve operation of European genebanks if funding remains at the current level?
- Suggested solution
 - Task sharing
 - Active long-term collaboration, current focus of MAS
 - MoU =~ legal framework
 - AQUAS (AEGIS quality system) = information on the mode of operation
- But no additional funds

2.1 Objectives and organisational aspects

- Pan-European
- Ex situ focussed
 - with an option for in situ management
- EURISCO as central information unit
- AQUAS can be seen as a process triggering stronger efforts at the national level


- Relies on data flow from the national level to the European level of
 - passport data
 - C&E data and
 - in situ data

About EURISCO



The EURISCO web catalogue receives data from the National inventories, and provides access to all *ex situ* PGR information in Europe.

Search the database

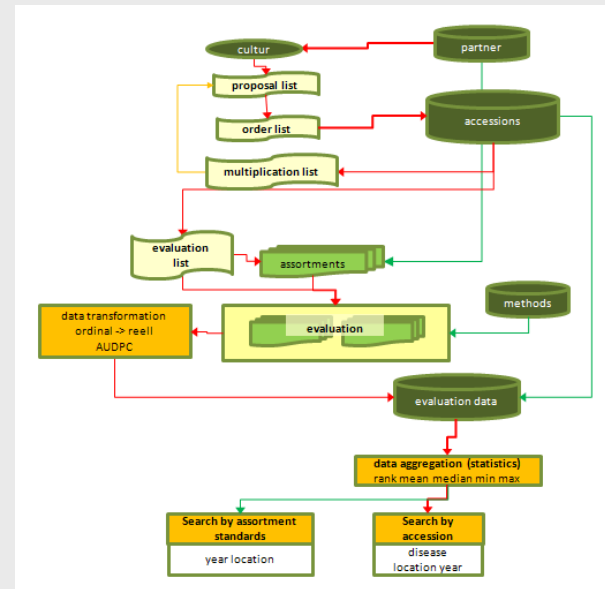


Quick Search

Make a search using key criteria

Advanced Search

Use various criteria to search db



C&E data
In situ PGRFA management data



3. Comparison and concluding remarks

D-NL cooperation (2 partners)

▪Strength

- Political will (at least for a significant period)
- Win-Win situation
- Extra funds
- Long-term maintenance of expertise as work is crop genepool oriented
- Long-term stability of products and services
- Political impact

▪Weaknesses

- Susceptible to political changes caused by the lack of a legal framework

3. Comparison and concluding

AEGIS (approx. 500 partners)

▪Strength

- **Political process driven by a large and organised interest group**
- **Based on a considerably improved legal framework**
- **Political weight**

▪Weaknesses

- **Accession based, registration of „European Accessions“ and selection of MAS**
- **Progress depends on the capability of ECPGR WGs to drive the process**

3. Comparison and concluding remarks

Condition for effective cooperation	D-NL until 1991	AEGIS
Clear perspective	yes	yes
Plan		
•Concept	yes	yes
•Methods	yes	yes
•Techniques	yes	yes
•Resources	yes	yes, many!
•Adequate means (as condition for stability)	yes	no
A recognized position in the larger community	yes	yes

Thank you for your attention

